

# Crossbow 3 and Contra 3: Recommended Bridle Modification. Version 1

---

## Benefits

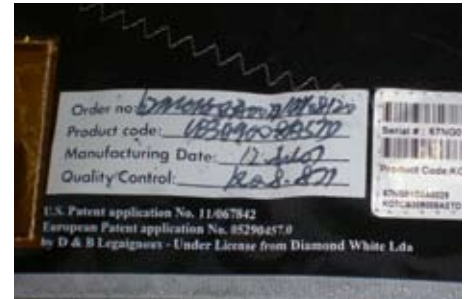
The Crossbow 3 and Contra 3 bridle modification, version 1 is a method to increase the turning speed and reduce the bar pressure of the kites.

This modification, if done properly, may also extend the lifetime of the bridle.

---

## Which Kites Need This Modification?

Check the printed manufacturing date on the wing tip of the kite. Some Contra and Crossbow 3 kites made prior to August 7th, 2007 will need this modification to achieve the benefits stated above. A simple way to visually check to see if your kite needs to be modified is to locate the pulley at TP-6. (see illustration on next page).



If the kite needs to be modified, the pulley will be connected directly to the leading edge of the kite using a short larks head connection.



A kite which needs the modification.

If the kite does not need the modification, it will have an extended link which connects the pulley to TP 6.



A kite which doesn't need the modification.